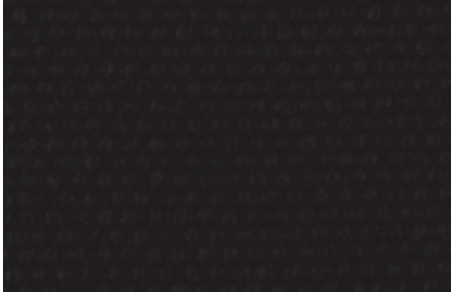


CLASSIC

FABRICS



CA15 Jetblack



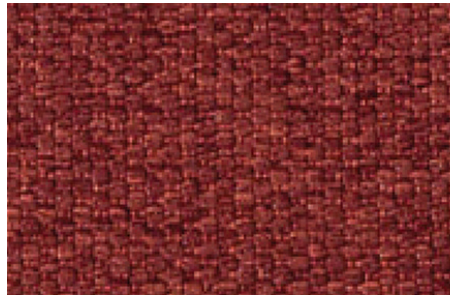
CA11 Stone



CA12 Indigo



CA13 Pear

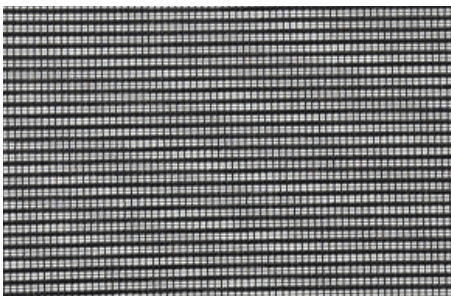


CA14 Jacinth

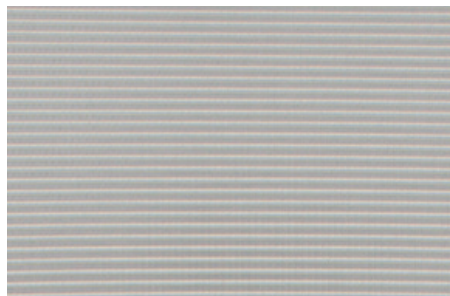


CA10 Midnight

MESH



BM Black Mesh



FM Fog Mesh

Application Q2 MESH TASK SEATING

TECHNICAL INFORMATION

Composition	100% Polyester
Weight	368 grams per square meter. 560 grams per linear meter
Width	165cm / 65" +/-2%
Abrasion	In excess of 100,000 cycles {ASTM D4966-12(2016) 12kPa Martindale & Pilling Tester}
Flammability	BS EN 1021-1: 1994 (Cigarette) BS EN 1021-2: 1994 (Match) BS 7176: 1995 Low Hazard BS 476 Part 7 Class 1 California TB 117-2013 Section 1
Fastness to Light	4.5 (AATCC 16.3-2014) 40 Hours (AFU) Exposure
Fastness to Rubbing	Wet: 4.5 Dry: 4.5 (AATCC8-2016)
Tensile Strength	Warp 532.7lbf, Weft 432.8lbf {ASTM D5034-09 (2017)}
Seam Slippage	Warp 86.1lbf (STB), Weft 79.4lbf (STB) (ASTM D434-1995)
Maintenance & Cleaning	Professional dry cleaning recommended <ul style="list-style-type: none">• Protect from direct sunlight• Vacuum regularly using low suction• Wipe with a damp cloth using upholstery shampoo• Don't scrub or use stiff brush• Dry in the shade away from direct heat• Allow dry thoroughly before using
Colour Matching	Batch to batch variations in shade may occur within commercial tolerances Sample cuttings from the current stock shades can be obtained on request